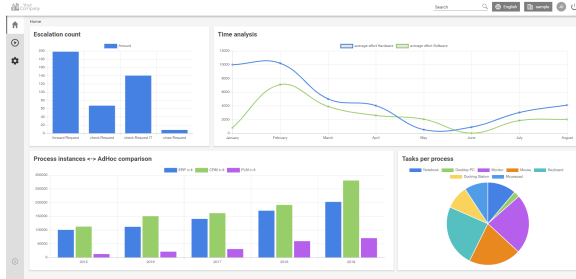


# Documentation

How to use the System - the long-standing BPM Suite for automation in the age of digitization.

This documentation is dedicated to general users with or without extensive experience with the system as well as process owners and administrators. The documentation contains everything that needs to be known about the system, the everyday workflow engine. Therefore this documentation will enable the user to work with system, manage processes and administer tenants.



Being new to the system it is advised to take a look at the [user guide](#) first. Experienced users on the lookout for a specific topic can use the navigation bar to the left side or simply use the search for specific keywords.

Latest Release

v7.1

Popular

activity and-  
gateway attribute  
bpm cpm css da  
shboard datab  
ase deployment e  
mail frameworks jav  
ascript mysql navi  
gation process-  
definition proc  
ess-  
instance p  
rocess-model pr  
ocess-variable r  
equirements sectio  
n-handling subproc  
ess swimlane task  
views XOR-  
gateway